



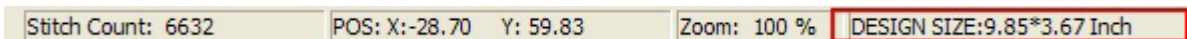
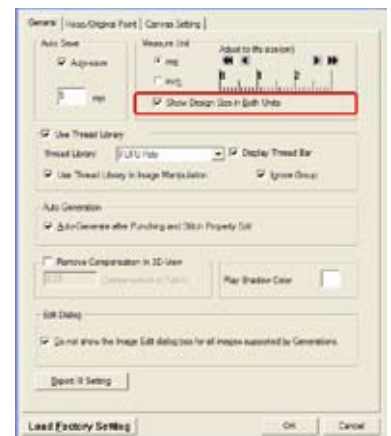
Version 1.6 Features

Welcome to Generations Software Version 1.6! Many changes have been made over time to improve the Generations Automatic Digitizing System's internal stitch processor. These changes have included more precise stitch pathing, travel stitch optimization as well as stitch generation development. This time around, our programming team has spent most of their efforts on updating & improving these dynamic fundamentals of the program. In addition to these enhancements, many new tools and options have been added.

New View Preferences Options

Show Design Size in Inches & MM

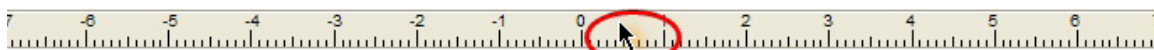
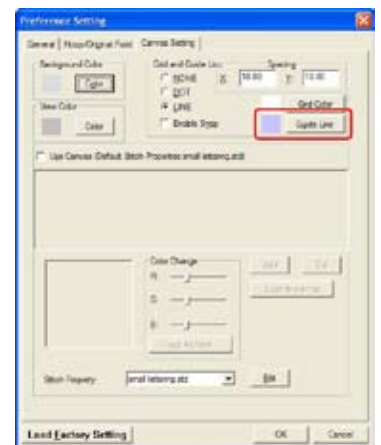
No matter which measurement preference you're in, view your design size in mm & inches! This allows you to work in mm for more accurate changes in regards to the stitch properties; but, see your design size in the Standard Unit . Within the General Tab in the View Preferences, check mark the option "Show Design Size in Both Units" - this will allow you to see the design size measurements in both Inches & Millimeters on the Design Status Bar, in the Design Information Dialog Box and on the Print Worksheet.



Adding Guidelines on the Design Workspace

Show guide lines on the design work area to line up objects on screen. There is no option to turn the guide lines on or off, but you can change the color within the Canvas Tab of the View Preferences.

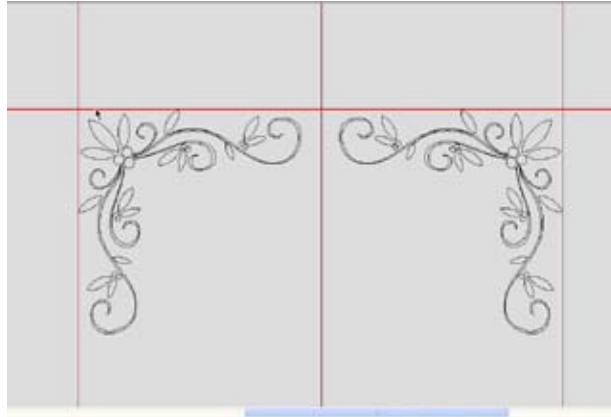
You must have the ruler bar surrounding the design work area showing. To add a guide line, just place your cursor over the top or side ruler bar and left click hold and drag onto your screen. If you choose the top ruler bar, you will get a horizontal guide line on your work area. If you choose the side ruler bar, you will get a vertical guide line on your work area. You can add as many as you want!



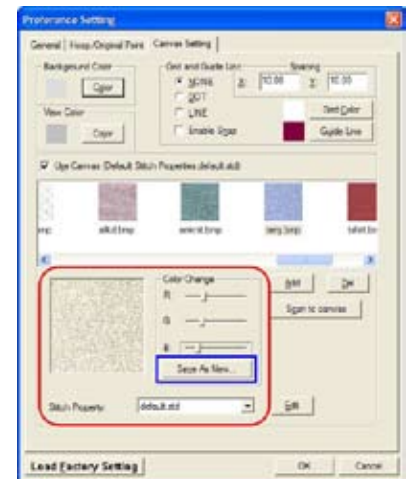


Version 1.6 Features

You also have the ability to adjust guide lines. To adjust the guide line (must be currently showing), just place your cursor over the guide line and it will highlight red. Once it is highlighted, left click hold and drag into the new position - or drag all the way off screen (toward the appropriate ruler bar) to dismiss the guide line.

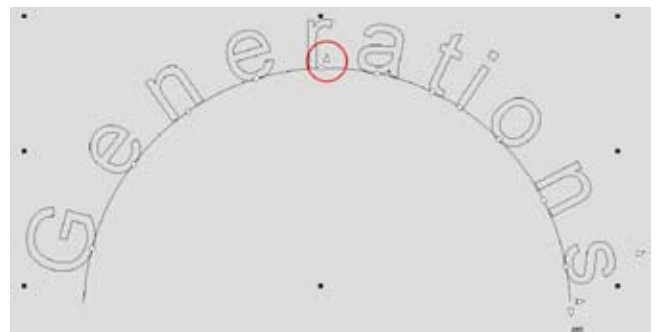


Save Existing Canvas backgrounds with new colors. Choose an existing Canvas in the View Preferences and change the Red, Green, Blue (RGB) values to alter the color to match a custom garment. Once you change the color, you can now save that background material into the Canvas library. After you change the color, left click on the Save As New button underneath to name and save the new Canvas into the library.



New Arc Path Control Point

Whether you are using a text path or a super align path, there is a new control point for the Arc. This new control point will alter the height of the arc. This control point is in the center of the arc path and points upward. To change the angle of the arc, place your cursor over the control point. Once your cursor turns into a cross hair, left click hold and drag to change. This will allow you to make the arc more or less extreme and changes the angle of the arc according to the end points.

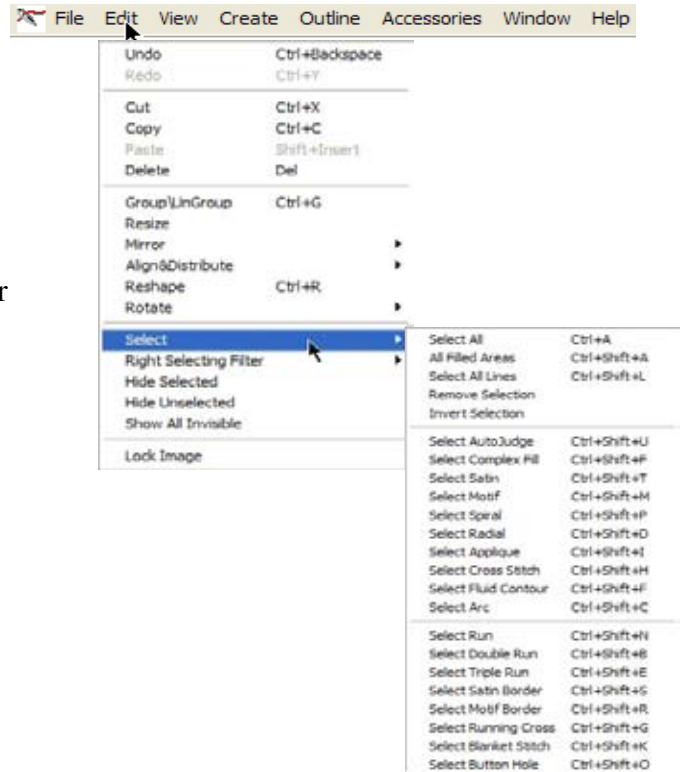
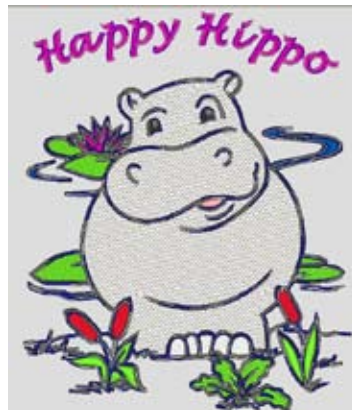




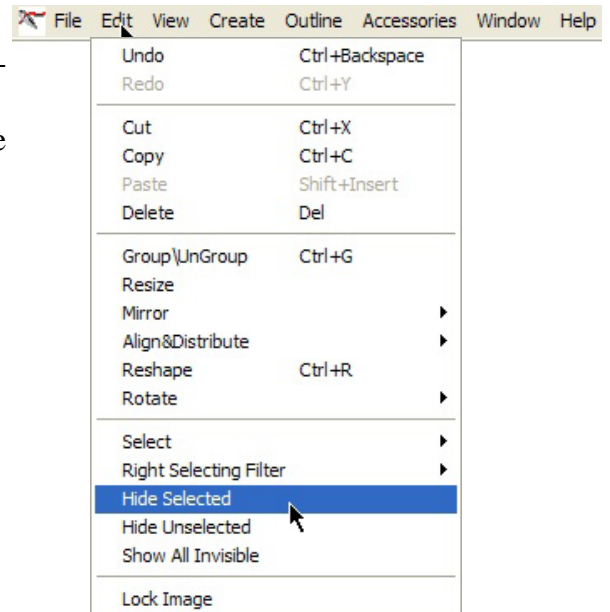
Version 1.6 Features

Select Objects by Stitch Type

Do you have a design where you only want to change only the satin stitches or only the complex fill areas? Now you can choose all areas with a certain stitch type using the Select options in the Edit menu. This makes it easy to change only the properties of a desired stitch type. Under 'Edit' on the Main Menu bar, scroll down to 'Select', then scroll over to find that you can select by stitch type. Choose the stitch type of the areas or lines you desire - it will choose these sections with a right click so you can make any properties changes to them.

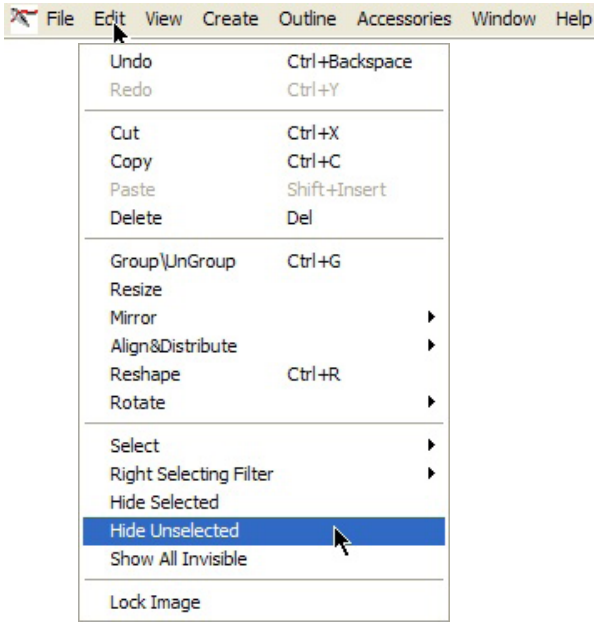


In addition to selecting these areas, you can make the areas that are selected invisible or make the areas that are not selected invisible. Once you have areas selected with the right click function, navigate to 'Edit' on the Main Menu bar and scroll down to 'Hide Selected' or 'Hide Unselected' - depending on which areas or lines you want to make visible/invisible.

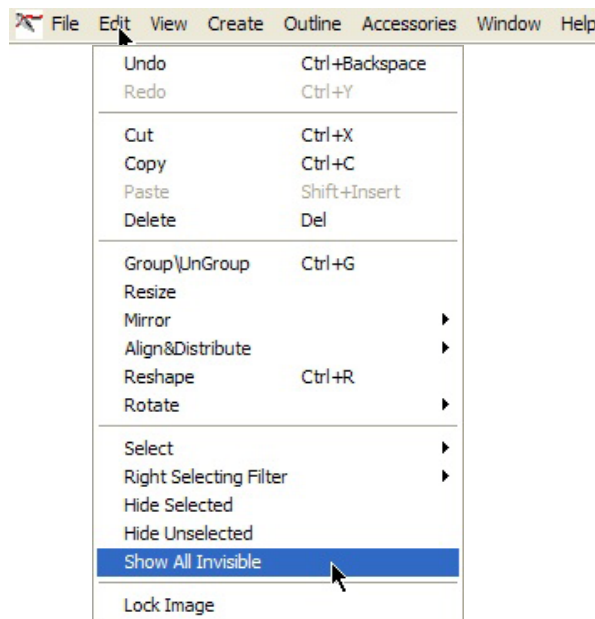




Version 1.6 Features



An easy way to turn these areas or lines back visible is through the same 'Edit' menu on the Main Menu bar. To turn these areas back to visible, just left click on 'Edit' on the Menu Bar and then scroll down to select 'Show All Invisible.' That way, you won't have to deselect all the visible/invisible icons on the stitch sequence bar!

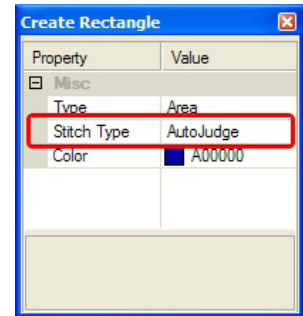




Version 1.6 Features

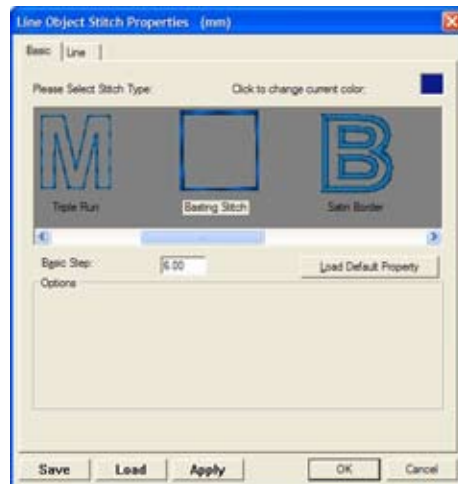
Properties Options in Manual Punch Tools

Now, there are more options in the Properties Dialog box when using any manual punch tool. After selecting one of the manual punch tools, you now have the Stitch Type option showing. Within the Stitch Type options, choose the line or area stitch type before inputting any areas or lines.



New Line Object Stitch Type

New Basting Stitch! Use this stitch type on lines that are created in Generations. Hold your fabric down with the basting stitch - no tie stitches and a long stitch length ensures easy removal.



Building Blocks Added

Small lettering - satin & running stitch letters

Basting Blocks - squares and rectangles for standard size hoops

Banners - add names for personalization

