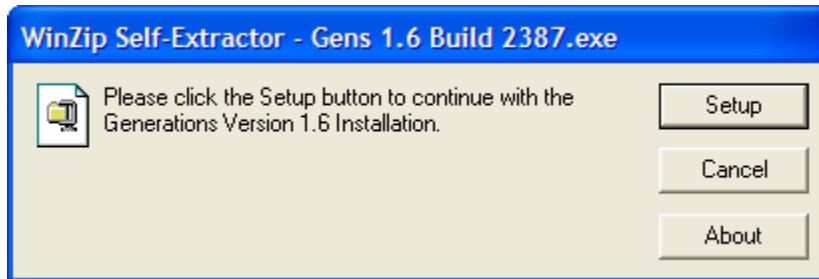
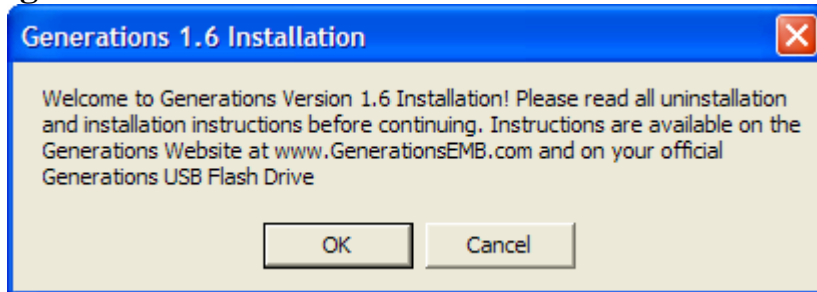
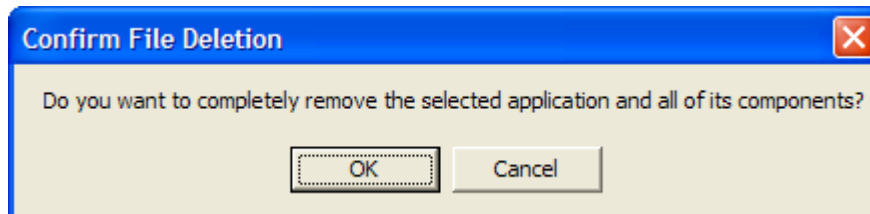


## Generations 1.6 Installation Instructions

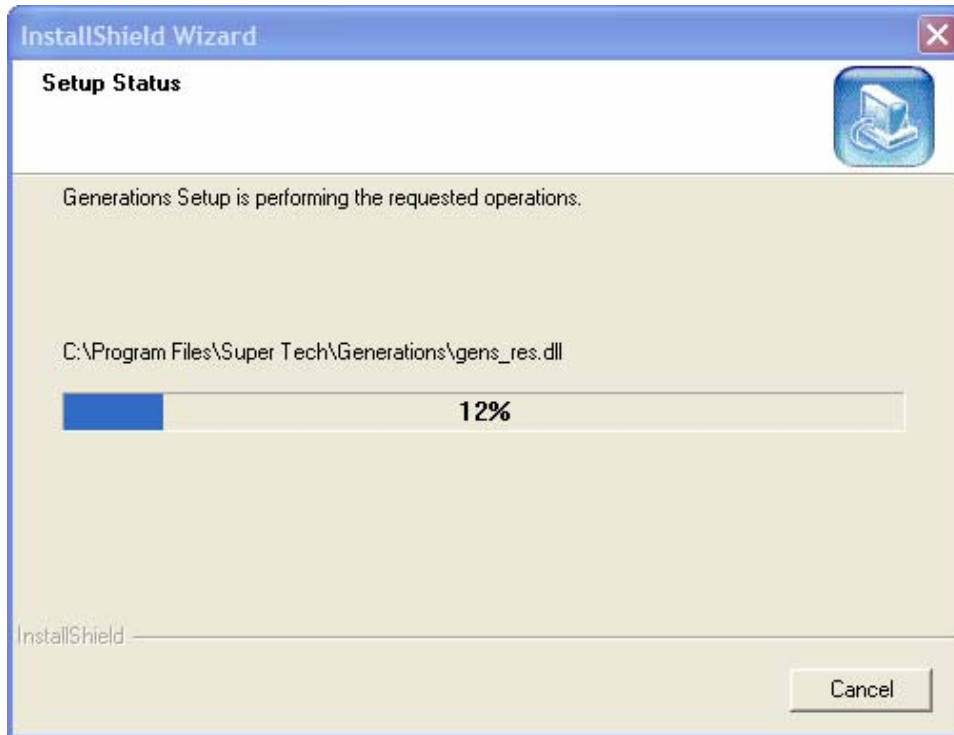
1. Double Click on the Generations 1.6 Installation Folder and locate the file Gens 1.6 Build2438.exe file in your computer. Double click on the file to open and execute the file. This is a self extracting zip file, so you will be prompted to click on the Setup button to start your installation.
2. Once the file has been executed, follow the prompts to install the program.  
**\*\*Remove the Dongle (blue security device) properly BEFORE starting the Installation\*\***



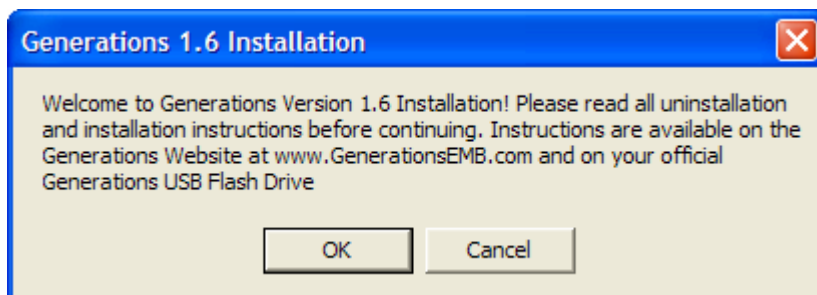
3. If you have a previous version of Generations already installed (Generations Version 1.5.3 or lower), a dialog box will appear and ask you to confirm uninstalling the previous version of Generations. Click OK to Continue. If you do not have a previous version of Generations installed, the installation will continue – skip down to step 5.



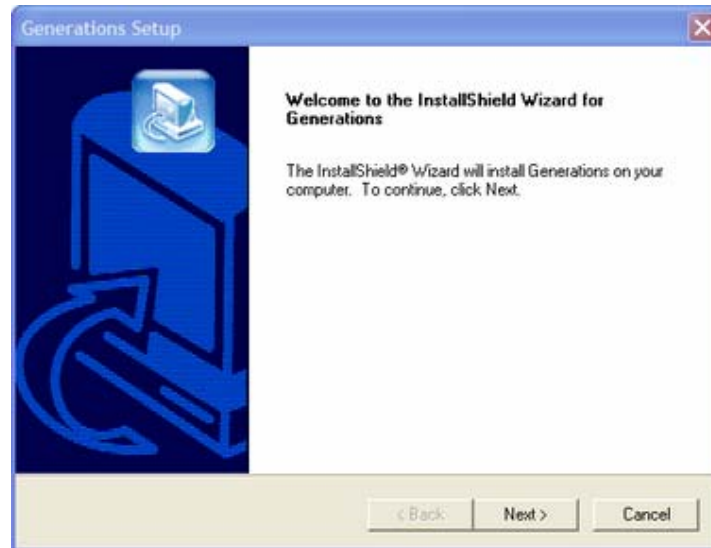
4. The uninstallation will automatically begin. Once it is finished, it will automatically close. Now, you will have to start the installation once again.



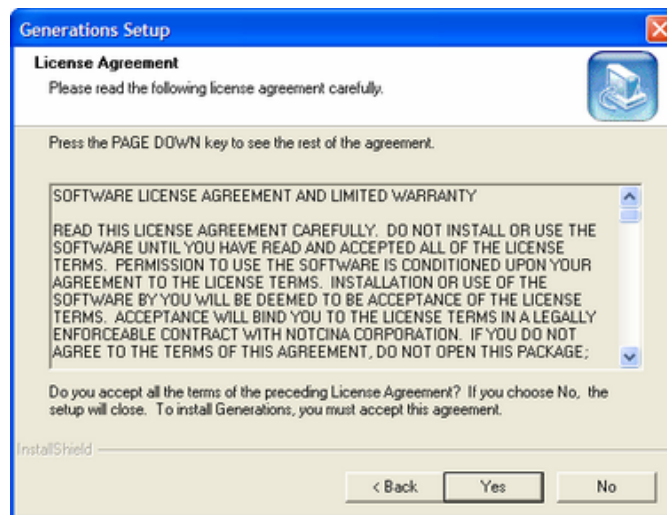
5. Locate the file Gens 1.6 Build2438.exe file in your computer. Double click on the file to open and execute the file. **\*\*Remove the Dongle (blue security device) properly BEFORE starting the Installation\*\***
6. Once the file has been executed, follow the prompts to install the program.



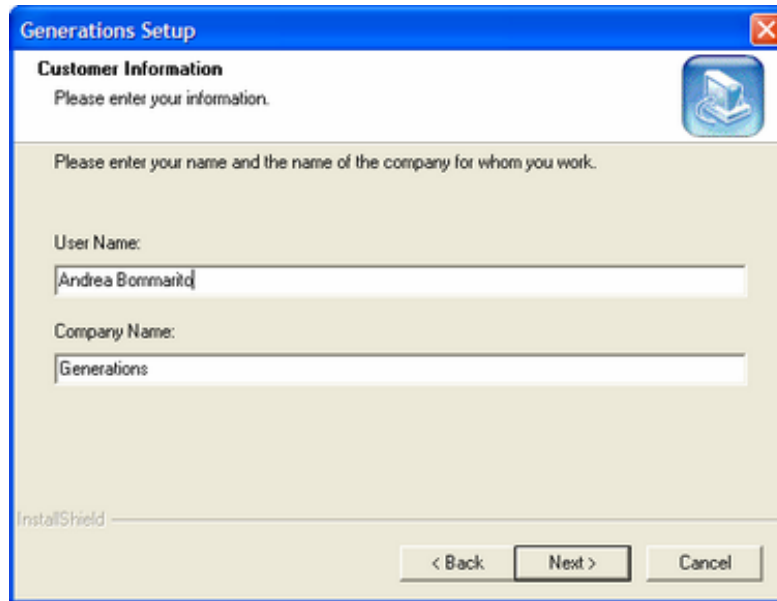
7. After you click on the Setup button, the installation will begin. Follow the prompts to install new Version 1.6. Click on the Next button to continue.



8. To continue installation, you must accept the License Agreement by clicking on the YES button. Clicking NO will end the installation.



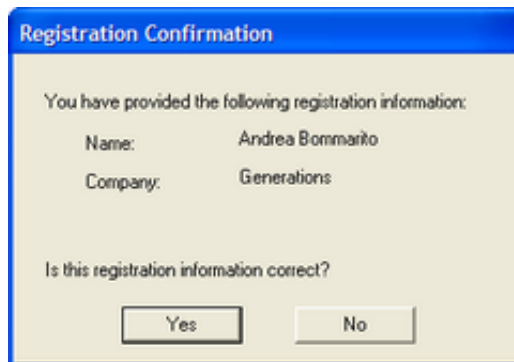
9. Enter your user information – User Name and Company Information. Click Next to Continue.



The screenshot shows a Windows-style dialog box titled "Generations Setup". The window has a blue title bar with a close button in the top right corner. The main content area is light beige and contains the following text and controls:

- Customer Information** (Section Header)
- Please enter your information. (Instruction)
- Please enter your name and the name of the company for whom you work. (Instruction)
- User Name: (Label) followed by a text input field containing "Andrea Bommarito".
- Company Name: (Label) followed by a text input field containing "Generations".
- InstallShield (Text at the bottom left)
- < Back (Button)
- Next > (Button)
- Cancel (Button)

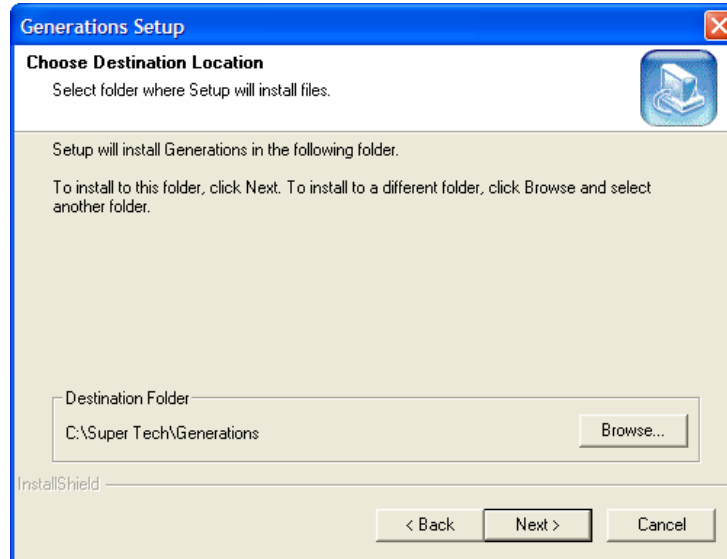
10. If you made an error in the User information input, you can select No in this option menu and go back to make corrections. Once the information is correct, click Yes to continue with the installation.



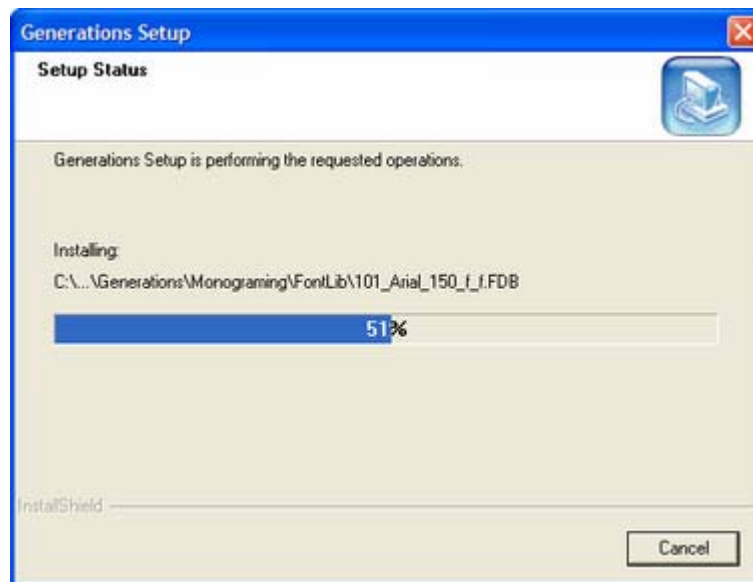
The screenshot shows a dialog box titled "Registration Confirmation". The window has a blue title bar. The main content area is light beige and contains the following text and controls:

- You have provided the following registration information: (Text)
- Name: Andrea Bommarito (Text)
- Company: Generations (Text)
- Is this registration information correct? (Text)
- Yes (Button)
- No (Button)

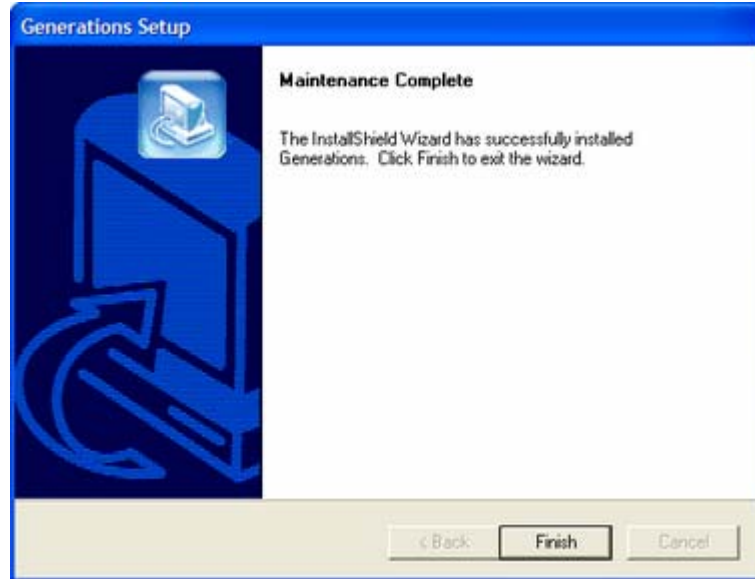
- Generations will automatically select the default installation location. You are able to change this location if you desire. It is not recommended to change the location; it may make updating at a later date more difficult. Click Next to continue with the installation.



- Generations will display the installation progress window. During this time, other windows that may be open may require a response from you.



13. Once the installation is finished, click Finish and your desktop will be restored.



14. Plug the dongle (blue security device) back into the USB port and launch the program by double clicking on the Generations Icon on your desktop or from the Program Menu.

If you have any trouble with the installation, please email our software technical support at [techsupport@generationsemb.com](mailto:techsupport@generationsemb.com). Make sure to include all necessary information before submitting your information. For a list of that information, please visit [http://www.generationsemb.com/site\\_contents/Contact%20Us/findspecs.html](http://www.generationsemb.com/site_contents/Contact%20Us/findspecs.html).