



Generations® Monograms +™
Monogramming Masterpieces
By Bernadette Griffith Generations® Software




Creating monograms in **Generations® Monograms+** is a snap. Just select one of the build in monogram templates, a **True Type Font™** lettering style and one of the decorative borders and frames included in the **Monograms+™** program.

Since **Monograms+** is a **Generations®** software product, you have complete freedom of monogram lettering styles and access to the user friendly editing tools allowing you can do much more than just a basic monograms with a little design around it.

Getting Started

All measurements for this lesson are given in **millimeters**. If you are working in inches, please change the measure of unit to mm in the view preferences for this lesson.

1. Open your **Generations® Monogramming+™** program using the desktop icon or from the **Start** menu.
2. To create a monogram with a decorative border, click on the **Monogram** icon  to open the **Monogram** dialog box.
3. On the right side of the Monogram dialog box, check that the **Enable Background** option is active.

For this lesson we are using one of the built in borders options.

4. Click on the **Square** menu button to select the border or background.
Decorative borders will appear as thumbnails.



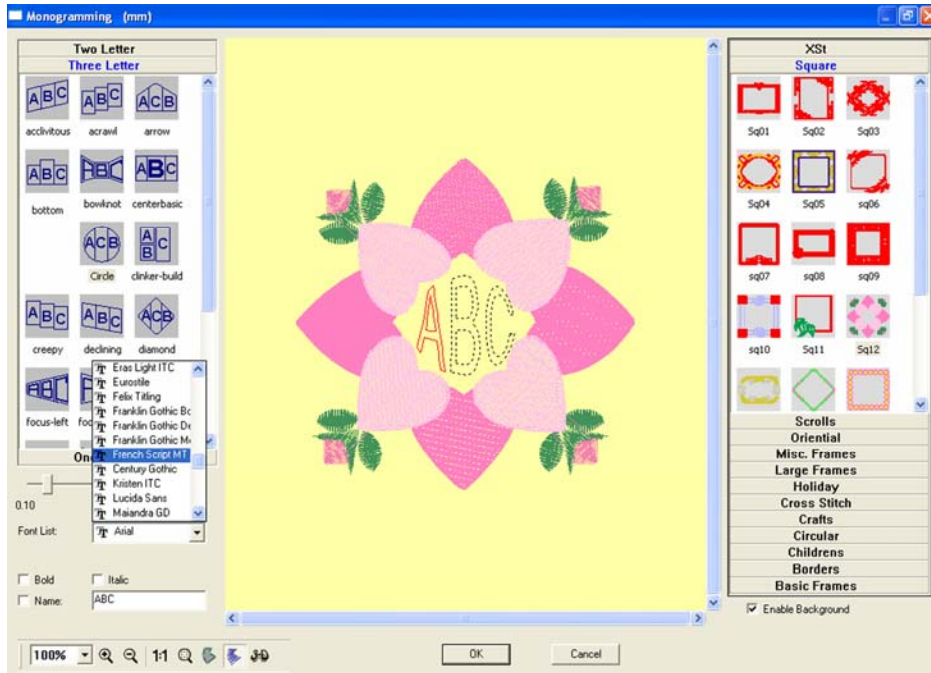
**Generations® Monograms +™
Monogramming Masterpieces**
By Bernadette Griffith Generations® Software

5. Use the slider bar on the side of this window to scroll down and locate border **Sq12**.

6. **Click** on the thumbnail image of **Sq12** it will appear in the center display of the monogram dialog box.

***Tip:** If you can't see the complete border, click on the Maximize Window icon on the corner of the dialog box.*

If you want to see the Border in a realistic stitch view, click on the 3D icon.



7. To the left of the dialog box, click on the **Three Letter** button to select a monogram **template**.

8. Click on the thumbnail of the **Circle lettering template** and an outline of the lettering template will appear in the center of Sq12 on your screen.

***Generations® Monograms +™** uses True Type Font™ lettering for monogram lettering so your monograms are never limited to a set number of styles.*

9. Select the desired font style from the list of **True Type Fonts™** located on your computer. If no selection is made the default font will be used.



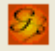
Generations® Monograms +™
Monogramming Masterpieces
By Bernadette Griffith Generations® Software

Tip: You can use additional decorative or script fonts by adding True Type Fonts™ to your computer. Office supply stores often have packages of these fonts at reasonable prices, or you can download free fonts from www.fontgarden.com.

10. **Generations® Monograms+™** allows custom fitting of lettering templates with the borders. Use the **slider bar** located below the template thumbnails to increase or decrease the lettering size.

*Sliding the bar to the left decreases the size of the lettering template.
Sliding the bar to the right increases the size of the lettering template.*

11. When you are satisfied with the look and layout of the border and monogram lettering, click **OK** and the new monogram and border is inserted in to the program.

12. **Generate (F9)**  to create stitches in your design.


*You could stop here, but with **Generations® Monograms+™**, you have the ability to do more with the monogram and borders.*

Taking Monogramming a Step Further

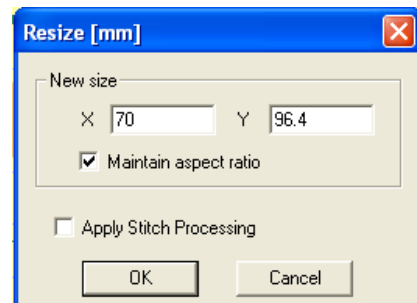
For this lesson we are going to create a large border and use the monogram letters to make a monogram band across the bottom of a hand towel.

1. **Left click** off to the side on an empty area of your screen to **deselect** all items.
2. **Left click** towards the outside edge of the border to select only the border.
3. **Copy** the border (CTRL+C) and then **Paste** (CTRL+V) a new border directly on top of the original one.

The new border will be surrounded by black boxes showing that it is selected.

4. **Click** on the **Resize** icon  or use the **Edit** menu and then **Resize**.

5. When the **Resize dialog box** opens, change the **X value to 70** and the Y value will automatically be recalculated.





Generations® Monograms +™
Monogramming Masterpieces
By Bernadette Griffith Generations® Software

6. Click **Ok** and the pasted border is resized.
7. Move your mouse over the center of the selected, resized border until you see a **4-way arrow icon**.
8. **Press and hold the left mouse button** in and **drag** the resized border to the right side of the original border.
9. As accurately as you can, center the two borders and allow them to barely touch at the tips of the hearts on the side of the borders.
10. With the resized (smaller) border still selected, **Copy** the smaller border and then **Paste** a second small border.
11. Move the second small border to the left of the original center border.
12. As accurately as you can, center the borders and allow them to barely touch at the tips of the hearts on the side of the borders.

Lining it all Up

We need to make sure that the borders and monogram lettering is lined up and centered.

1. Select **Edit** from the menu. From the **Select options**, choose to **Select All**.



All items in the design will be surrounded by black boxes showing that they are selected.



Generations® Monograms +™
Monogramming Masterpieces
By Bernadette Griffith Generations® Software

2. From the **Edit** menu, select **Align & Distribute** and then **Align Horizontal Centers** .

Now all the sections of the design are aligned and we can start working on the lettering.

Moving Monogram Template Letters Around

Monograms+™ allows you to edit the letters of your monogram.

1. **Left click** off to the side of the design on a blank or empty spot in the design window to **deselect** all elements in the design.
2. Then **Left click** on the center of the **monogram lettering** to select it for editing.

Only the letters should be surrounded by black boxes.

3. Select **Edit** and then **Group/Ungroup**  from the menu.


The letters will be ungrouped and you can move them into new positions on the border.

4. **Left click** off to the side of the design to **deselect** all letters.
5. Then **Left click** on the letter in the **right** of the monogram template.
In this case the letter B.
6. Move the letter to the center of the border on the left.
7. **Repeat** for the letter on the right, *in this case the letter M* and move that letter to the center of the right side border.

TIP: *If your letters do not fit properly into the border center or need resized, left click on the black boxes around the letter.*

By dragging the black boxes on the corners you can increase or decrease the overall letter size.

By dragging on the black boxes located on the side of the letter you can make the letter taller or wider.

8. **Select all** elements in the design and then **Align Horizontal Centers** .

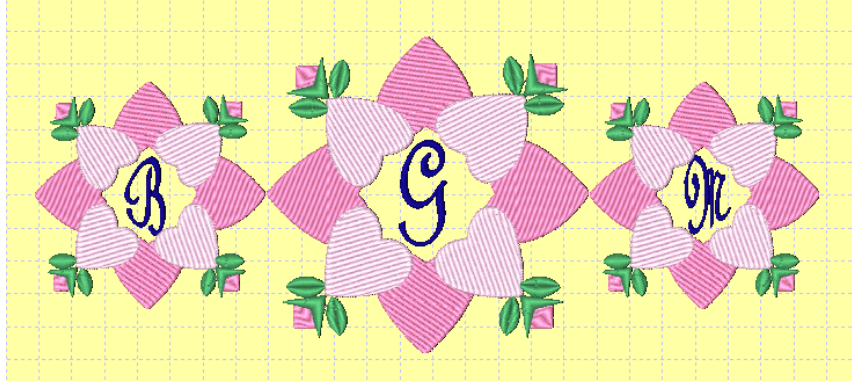


Generations® Monograms +™
Monogramming Masterpieces
By Bernadette Griffith Generations® Software

9. With all the elements in the design still selected, click on **Edit** and then

Group/Ungroup .

The design is now grouped and can be moved or resized as one piece.



Editing Underlay and Other Options

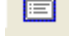
Generations® Monograms +™ allows for selected areas to be edited in many ways. You can change the fill type or pattern, outline the areas or lettering, add or change underlay setting and adjust the compensation settings.

Since this design is going to be placed on a terry towel, there are changes that can be made to the underlay and overlap compensation to improve stitching quality.

To the left of the designs window, there are **color chips** representing the colors in the design.

1. Click on the deeper **pink color chip** and all the areas of that color will be selected with blue moving lines.



2. Select **Stitch** from the menu and then select **Stitch Settings** .

3. In the **Area Object Stitch Properties**, select the **Underlay** tab to access the underlay settings.

4. Click on the **Complex Grid** underlay thumbnail in the **Available Mode** and use the **arrow** to move the underlay to the **Selected Mode** box.



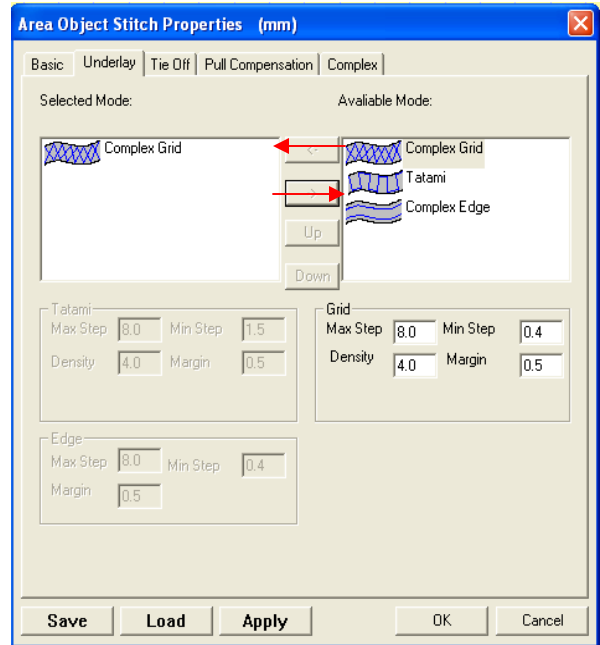
**Generations® Monograms +™
Monogramming Masterpieces**
By Bernadette Griffith Generations® Software

5. Move the original **Tatami** underlay to the **Available Mode** box so that only the **Complex Grid** underlay remains in the **Selected Mode**.

6. Click on the **Compensation** tab to access the compensation settings and enable the **Cross Compensation** and place a value of 0.50 in the compensation setting.

7. Click on the **OK** button and the changes are applied automatically to the selected areas.

8. **Repeat** this for the lighter pink areas in the design.



Setting the Sewing Order and Color Sorting

Since the other borders were pasted into the design, the thread colors repeat and the sewing order is not logical.

1. To set the sewing order and color sort at the same time, select **Accessories** from the menu and then **Optimize Stitching Order**.

Generations® Monograms +™ will automatically set the sewing order, sort the colors for the best sewing results, recalculate the in and out points and place traveling stitches to avoid jumps stitches in the whole design.

Or you can set the sewing order and color sort manually. Generations® Monograms +™ will still recalculate the in and out points and place traveling stitches to avoid jumps stitches in the whole design but it will be based on the sewing order you select.

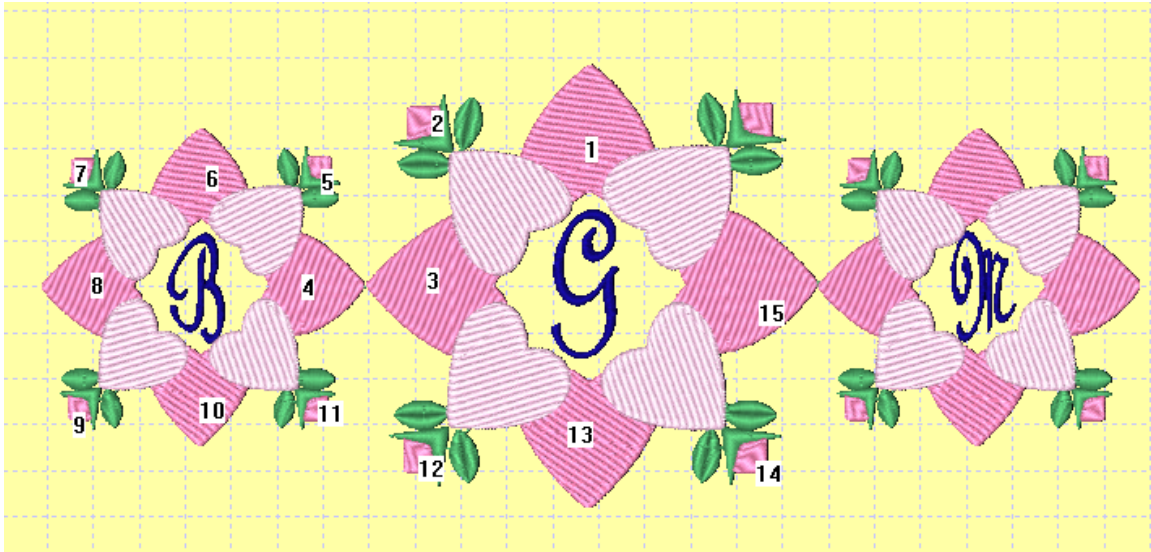
Generate the changes to your design.

1. To set the sewing order **manually**, select **Accessories** from the menu and then **Set Stitching Order**.

2. **Left** click on each piece of the design in the sewing order desired.



Generations® Monograms +™
Monogramming Masterpieces
By Bernadette Griffith Generations® Software



Small numbers will appear on or near the area or line selected displaying the sewing position of that area or line.

3. When you have finished setting the sewing order, press the **ENTER** key and then generate the changes to your design.

Changing Colors

1. With **Generations® Monograms+™** change the color of any section of the design by **Right** clicking on that area or change the color of many same color areas by **Left** clicking on the color chip on the color bar on the left.

2. Then select the desired thread color, based on the selected **thread catalog** from the **interactive thread bar** at the bottom of the screen.



*You can also outline and area or letter, change the area fill types and much more. Select an area or line and use the **Stitch Properties** icon to access fills and patterns. Or use **Stitch** from the menu and outline a selected area.*

Previewing the Design

To see what the design will look like on a Terry towel, preview the design with your fabric and color choice.

1. Click on the **View** and then **View Preferences** option from the menu.

2. Select the **Canvas Setting** tab to access the fabric selections.



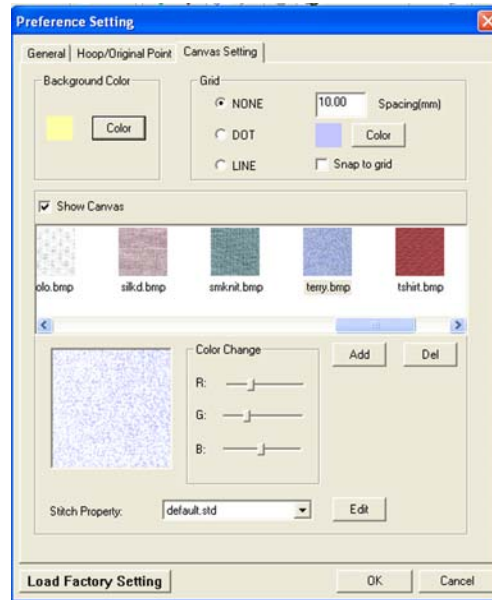
Generations® Monograms +™
Monogramming Masterpieces
By Bernadette Griffith Generations® Software


3. In the **Grid** option, select none.

4. Place a check mark on the **Show Canvas** option to display fabric.


5. Click on the **terry.bmp** thumbnail to select that fabric type and then use the **slider bars** below to change the color of the fabric background to the color you will be using.

6. When you are satisfied with the color, click **OK** and the fabric will be displayed behind your design on the screen.



7. Click on the **3D**  icon for a realistic stitch view of the design file on the selected fabric background.



8. If you are satisfied with the results, **Generate**  the complete design on last time to make sure that all changes have taken place in the design.

9. **Save**  the design and then **Export**  it to the machine format for your machines type.

You are ready to create your own Monogram Masterpiece!