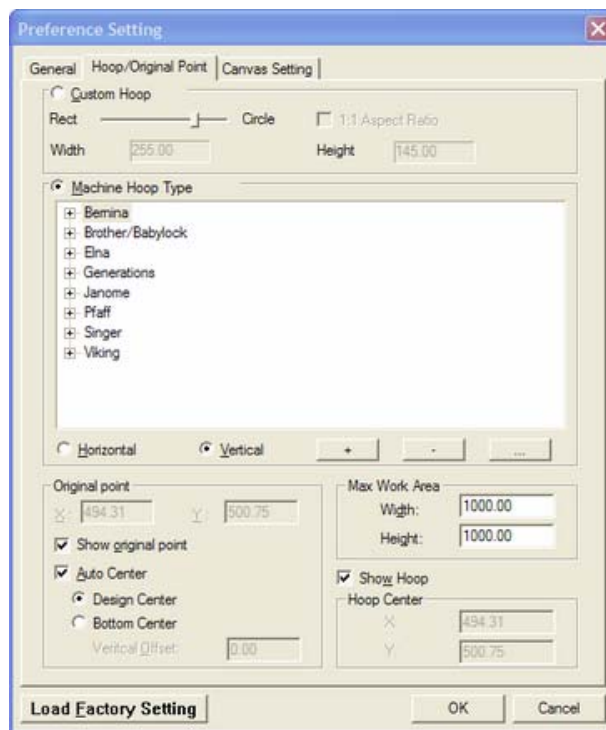


New & Improved View Preferences

The Hoop/Original Point layout has been improved for ease of use to pull and choose your hoop from the manufacturer and to save your own hoops! Use the scroll bar in the custom hoop for circle or rectangular corner settings.

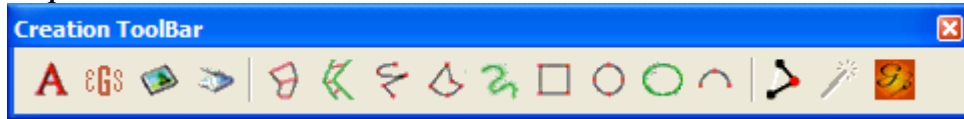
New Hoop Sizes have been included in the improved View Preference Settings. Find your hoop by manufacturer and style type. You can also add and save your own hoop sizes within the Hoop/Original Point Tab. Just select the plus button below the hoop types to add your own hoop size within the specific manufacturer selected – or create your own set of hoops all together! Edit and Delete hoops within the hoop preferences to customize your hoop settings. *Even though the new hoops have been added for the Janome machine, the JEF file format is still limited in size. You must split the design in Generations with the Dividing tools or you must use another program to export to the JEF+ format.*

Save your designs to start and stop in the Design Center or Bottom Center. If you choose to save the Bottom Center, you can also change the offset to better line up your design.




When using a maximum work area, you can view your work area as your background color and the outside parameters as another color. This is in the Canvas Setting Tab.


New & Improved Manual Tools




The current manual punch tools have been updated to include more preferences at your fingertips. For most of the area tools, you can choose area or line and also choose your color before you start punching. These preferences give you more freedom to choose the kind of area you want and the color you want without having to go through so many different steps.

Over 15 new manual tools have been included to offer more creative freedom in digitizing. Once these shapes are input, press Enter on your keyboard to end and then ESC to deactivate the tool.

New Satin Tool  – this tool can create satin areas side by side. Create one side at a time to form each side independently and then input the angles to your desire. Using this new tool will help digitize satin areas that are odd shaped or have special satin uses.


Create Continuous Line  – this is the ultimate scribbling tool! You can draw a continuous line just by holding down your left mouse click button and draw! Sign your name, scribble in shading, or just draw freely. You can use this tool with running stitches, bean stitching, satin stitching, motif lines, blanket stitches, and buttonholes. Create your own motif to use on this continuous line for the ultimate design element.


Create True Ellipse  – create a true circle (or ellipse) by drawing from the center out. You are able to draw this area by the radius of X and Y. You can draw this shape as an area or line to create the effect you desire.


New Manual Punch Bar – this new punch bar offers new shape tools for you to create design elements with extra flair. These tools are great for quilting on your embroidery machine since you can input them as line stitching – even use motifs!





Each of these tools has special editing nodes to help change the style of the input. After the area/line is input, press Enter on your keyboard to input and then ESC to exit out of the tool.


Rounded Rectangle  – input a rectangle as an area or a line with rounded edges. With this tool, you don't have to use the “adjust with an arc” tool to round any square or rectangle – you can do it in just one step! After this new shape is inserted, you can then use the editing node to alter the rounded edges to your desire.


Ring  – use this shape to make circular, oval, square, and rounded rectangle rings. You can set the shape and then edit it for different effects such as thin or thick rings, rounded or square rings, and lines or areas. This shape is great for creating borders and frames – use the different stitch types included in Generations to give these shapes unique effects.


Spiral  – just as the name describes, you can input a spiral shape designs. With this tool, you are able to change the spacing of the spiral and where the first point starts. Use the Reshape tool after you create the spiral to make some really fun and funky designs!


Starburst  – when using this tool, you can create a starburst with 3 or more points – there's no limit! Create starbursts and then use the editing nodes to alter the corners on the inside and outside of the sunburst and increase or decrease the size of the inside circle.


Starburst Sphere  – make cool sphere designs with this tool. Input the number of points (3 or more) that you would like on the starburst and then choose how many lines should cross over (in the properties box). By having the crossover lines, this creates a sphere effect. After it is input, you can even edit how rounded the points are on the starburst.


Sector, Arch, or Arc Line  – this tool provides many shapes to play with. You can input a sector, which is similar to a “pie chart” shape that has editing tools to change the size of the sector or “pie.” The Arch inputs a circle with a blunt or straight end – you can change each end to alter the amount of circle or line that is in the arch. And, the Arc allows you to input a fixed arc line where you can change the length of that arc line.

Moon  – input any size crescent “moon” shape as a filled in area or a line. Once the moon is input, you can then use the special nodes to change the crescent – change it to a waxing, waning, or full moon. Use this tool with the starburst tool and create a beautiful starry night!

Cross  – quickly insert a 4 way cross shape with this new punch tool. You can use this tool as a line or an area and edit the cross' vertical and horizontal legs.

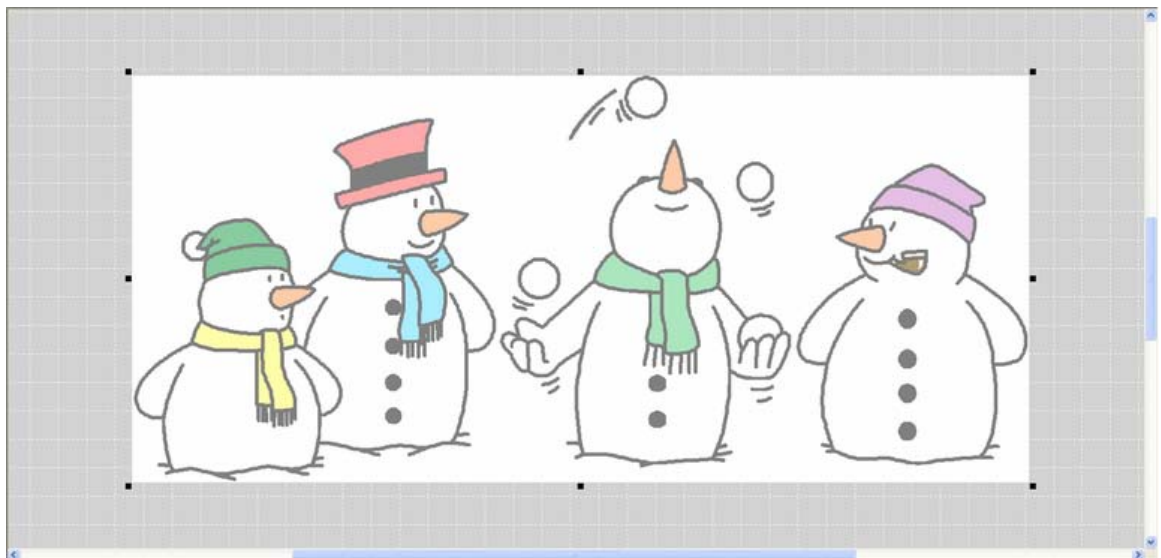
Cross Arrow  – this new tool is similar to the cross, but also enters in points at the end of each cross element. Create multiple cross arrows and use the rotating and aligning tools to make distinctive embroidery patterns. Edit the horizontal and vertical crosses as well as the end points.

3 Sun Styles  – each sun has a distinctive style! Use Sun Style 0, 1 or 2 to come up with the design you desire. You can define how many rays the sun will have (between 3 and 16) and also stylize the rays and the sun's center by the special editing points. Use the sun styles as outlines or areas or both!

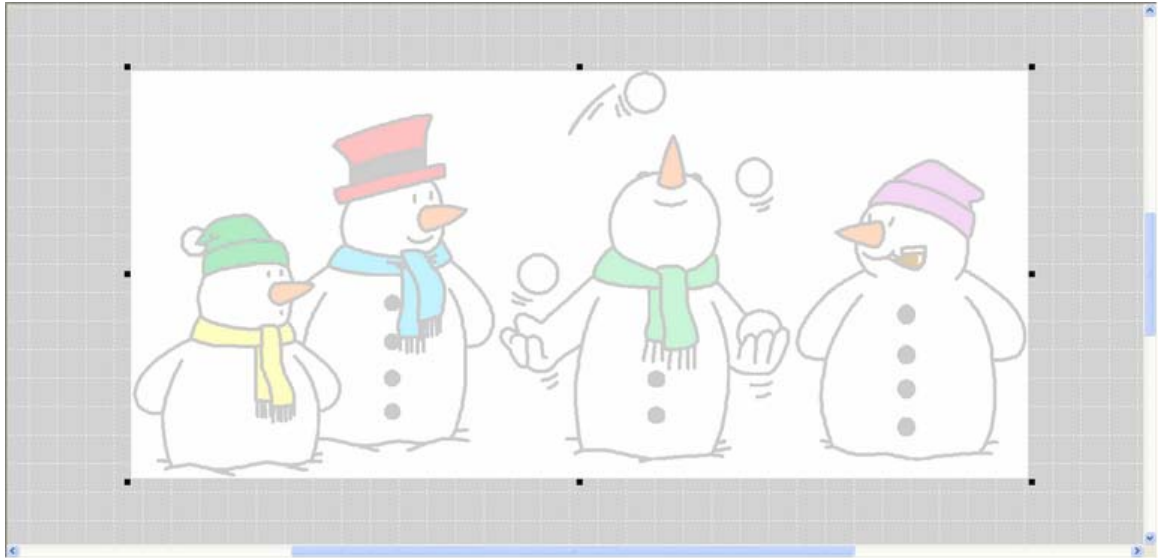
Heart  – instead of having to draw a heart, you can now input it automatically with this new tool. Change the different special editing points to alter the size and shape of the heart.

New and Improved Background Image Viewing

When using an image as a template, you can increase or decrease the brightness of the image by using the + and – buttons on your computer. Just make sure you are selected on the image with a left click in order to change the brightness. *Hint: If you are using a laptop, you may have to use the SHIFT key when pressing on the + or – keys.*



Lighten the image by using the minus (-) key on your keyboard.



Combine embroidery with printing! Use an image to print on your fabric and embellish it with stitching. By using an image as a template, you can draw on it using the new Generations Punch Tools. Use the Continuous Line tool to scribble on images or use any of the other manual punch tools to truly create unique embroidery.

New and Improved Onscreen Design Properties

Now in the Generations Stitch View (while viewing needle penetrations), you can view the different design functions on screen while viewing the needle penetrations. You can see right on screen where a color change is, a trim, or a stop. Also, insert functions at stitch points when using a right click in the edit mode. You can replace individual or groups of stitches by a normal stitch, jump stitch, or a trim. This is great to use when editing designs. Also, in the improved stitch view, you can now view embossed areas without having to jump to the embossed view.



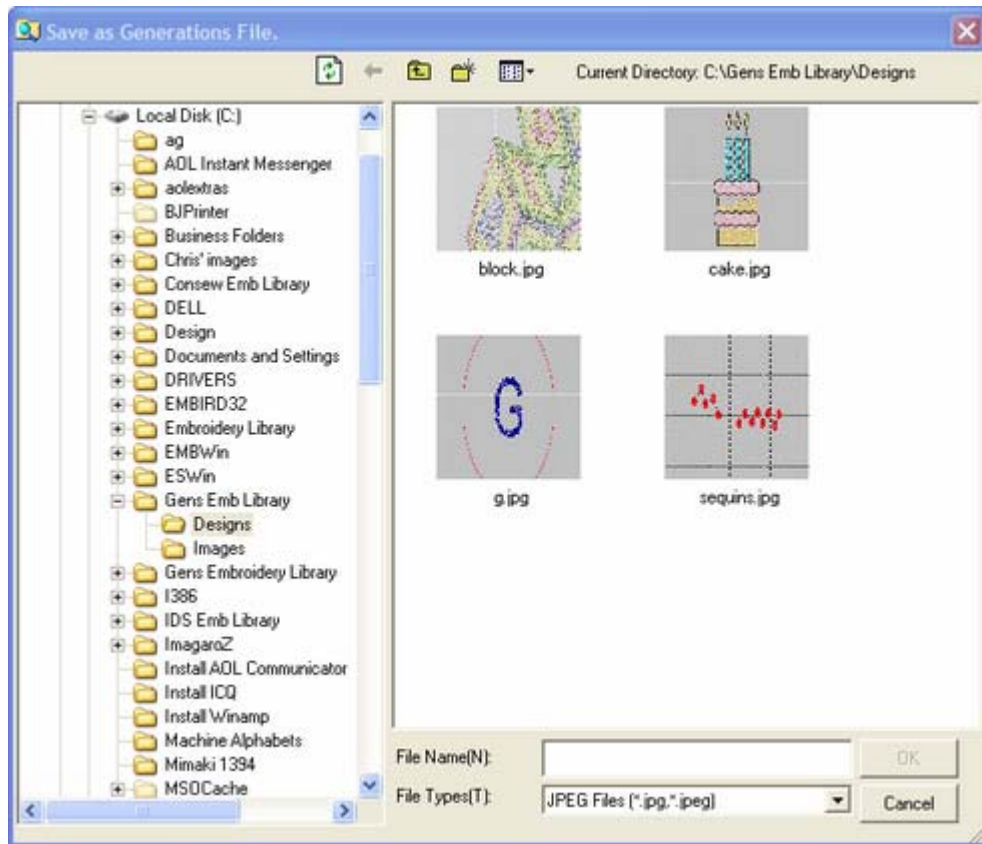
Customize your shortcut Keys

Customize Generations shortcut keys! Now you can use your own shortcut keys for the different tools and functions in Generations. To program your own shortcut keys, go to Help on the Menu Bar and then select Keyboard Shortcuts. A new dialog box appears to allow you to Customize your Shortcut Keys – change the different menu catalogs to find the different menu commands. Delete the current ones and input your own – or you can keep all the defaults!



Email Pictures of Your Design

Email designs quickly and easily by saving a Generations design as a JPG! Save the embroidery pattern as displayed on your design screen as a picture file so you can share it with all your friends. Just use the “Save As” function from the File menu and choose the jpg file type from the drop down menu. Once the file is saved as a jpg, it’s now easy to just email the file to anyone on your email list.



The full instructions with pictures will be up shortly – keep checking our website for the new PDF files.